



## EQUIPTRACK™

An easy way to track equipment

Conveniently track and manage your equipment through MLS.

SCAN IN  
SCAN OUT  
TRACK

EquipTrack is an important add-on component to MLS that lets you inventory and monitor your organization's equipment using barcode technology. You can customize the data fields to track any

information you want, including an item's condition, location, current user and date/time checked in or out. EquipTrack can help your business run more efficiently and reduce operating costs.

"Nesbit's user friendly interface enables me to keep track and update our catalogue of over 39,000 assets on a daily basis."

DIRECTOR,  
NEWS OPERATIONS,  
BROADCAST NETWORK

### PRODUCT BENEFITS

#### Smart Tracking

- + Uses barcode technology
- + Track individual items or link and track items in a group
- + Record equipments' movement history

#### Easy Labeling

- + Create barcode labels for your equipment
- + Export MLS data automatically into Avery® DesignPro
- + Print packing lists and shipping labels

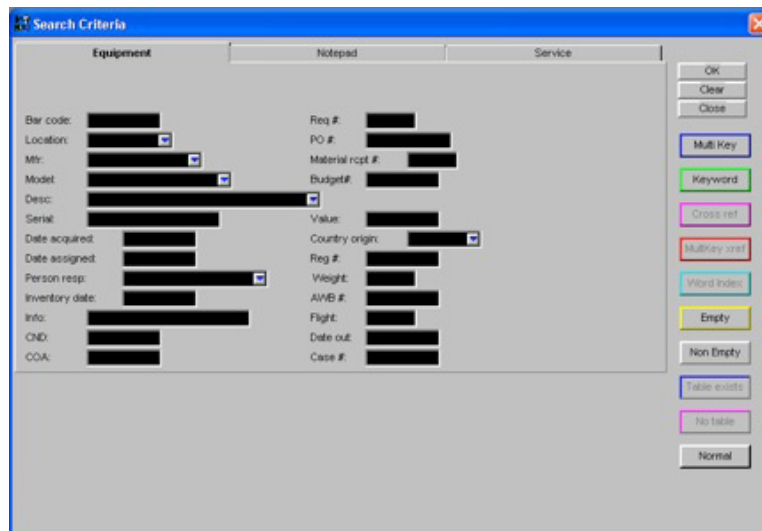
#### Detailed Reporting

- + Generate equipment inventory report
- + Produce usage history reports
- + Customize reports from Interactive Summary Screen

#### Long-term Cost Savings

- + Reduces missing equipment
- + Minimizes unnecessary equipment replacement
- + Decreases time spent looking for hardware

### SCREEN SHOT



SALES  
450 WEST 31ST ST, 4TH FL  
NEW YORK, NY 10001  
212.268.2717

DEVELOPMENT & SUPPORT  
243 NORTH UNION ST, STE 202  
LAMBERTVILLE, NJ 08530  
609.397.7720

INFO@NESBIT.COM  
WWW.NESBIT.COM